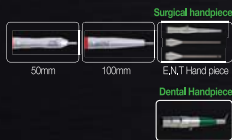




### SMAXEL Vaginal treatment mode



### SMAXEL Surgical Mode / Dental Mode



### SMAXEL Fractional Mode



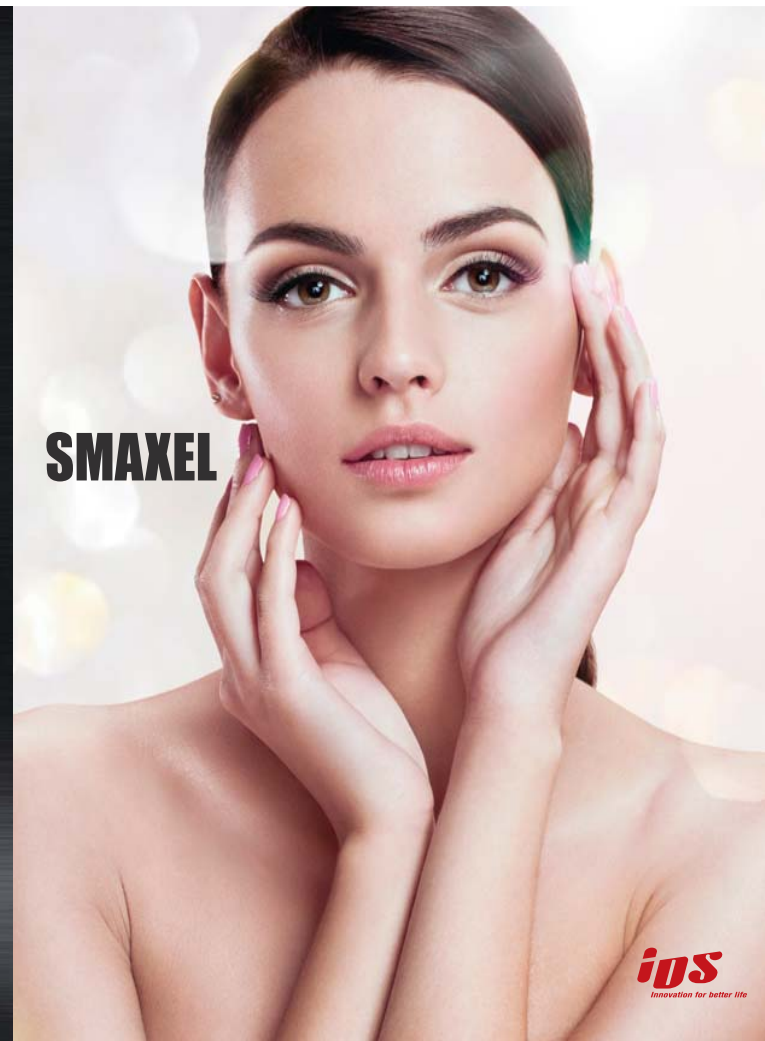
### SMAXEL Low Pain Fractional Mode



## Smaxel

### Technical Specification

|                         |  |   |
|-------------------------|--|---|
| Model                   | SMAXEL   |   |
| Laser Type              | CO2 Laser  |   |
| Wave length             | 10,600nm   |   |
| Laser power             | T-LOW  |   |
| Function                |  |   |
| Aiming Beam             | Diode Laser 650nm (5mw) 1-10 Step  |   |
| Surgical Mode           | Handpiece Type   | 50mm, 100mm(Basic) E,NT & Dental Handpiece(Optional)  |
|                         | Laser Operation Mode   | 1. CW 2. Normal Pulse 3. Super Pulse 4. Super Pulse Continuous 5. Ultra Pulse 6. Smart Protocol(General Surgery/Dental Surgery) |
|                         | Pulse Duration   | - Ultra Pulse : 90us-900us<br>- Super Pulse : 1000us-3500us<br>- Normal Pulse : 4ms-20ms  |
| Fractional Mode         | Repeat Time  | OFF, 2ms/500ms adjustable, 5ms, 10ms, 30ms, 50ms, 70ms, 100ms, 250ms, 500ms   |
|                         | Beam Mode  | Ultra Pulse   |
|                         | Density Level  | 1-23 Step(x,y line) ; 9dots-449 dots  |
|                         | Operation Mode   | Fractional Mode<br>Low Pain Fractional Mode   |
|                         | Beam Patterns  | Array,Grid, Random  |
|                         | Beam Size  | 2x2mm - 20x20mm   |
|                         | Beam Shape   | ■ ▲ △ ●   |
| Depth Level             | 1-5 Step   |   |
| Handpiece               | - Fractional Handpiece(Galvanic Motor)<br>- Vaginal Rejuvenation Handpiece(Optional) |   |
| Repeat Time             | OFF, 0.5, 1.5, 2, 2.5ms  |   |
| General Features        |  |   |
| Electrical Requirements | 220V, 6A, single phase, 50/60hz  |   |
| Cooling System          | water cooling  |   |
| Dimensions              | 350x360x1200   |   |
| Weight                  | 52kg   |   |
| Display                 | 10.2 inches color led  |   |



## Smaxel → Surgical Mode / Dental Mode

### Smart mode for Surgical Field (General Surgery, Dental Surgery)



< General Surgery >



< Dental surgery >

#### General Surgery Indication

|                               |                   |
|-------------------------------|-------------------|
| Corns, Warts etc              | Freckles          |
| Birthmarks(mole)              | Skin resurfacing  |
| Phimosectomy                  | Tumor elimination |
| Hemorrhoids and anal fistulas | Fine wrinkle      |
| Condyloma                     | Syringoma         |
| Shoring                       |                   |

#### Dental Surgery Indication

|   |                                  |
|---|----------------------------------|
| The second implant operation                  | Hyper sensitive                  |
| Hemostasis after dental extraction            | Herpetic gingivitis              |
| Crown lengthening                             | Frenulum excision                |
| Gingival excision, Gingival plastic operation | Cleaning of dental cuticle cyst  |
| Removal of pigmentation                       | Pulp capping -Fluorine coating   |
| Allergic splentitis                           | Sterilization in paradental cyst |
| Sterilization in root canal                   | Abscess treatment                |



## Smaxel → Fractional Mode

### Fractional (Fractional mode / Low pain fractional mode)



< Fractional mode >



< Low Pain Fractional mode >

#### Various Beam Pattern

■ Various beam pattern for each treatment



#### Ultra Pulse Beam Minimizes Thermal Damage and Side Effect



< Before & After >



< Smart mode for fractional operation >

#### Fractional Surgery indication

|                  |              |               |              |
|------------------|--------------|---------------|--------------|
| Skin tightening  | Wrinkle      | Large pore    | Acne scar    |
| Skin resurfacing | Stretch mark | Laser peeling | Rubbing mode |
| Pudenda          | LVR          |               |              |



## Fractional handpiece + LVR Handpiece

(Vaginal treatment)

#### Fractional handpiece (for Labium Treatment)



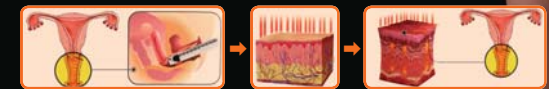
#### Smart protocol for LVR by Manual Treatment



#### Fractional handpiece + Auto Vaginal Rejuvenation Handpiece



## How does it work ?



high density laser beam delivers to vagina widely and it makes vaginal tightening & rejuvenation.

