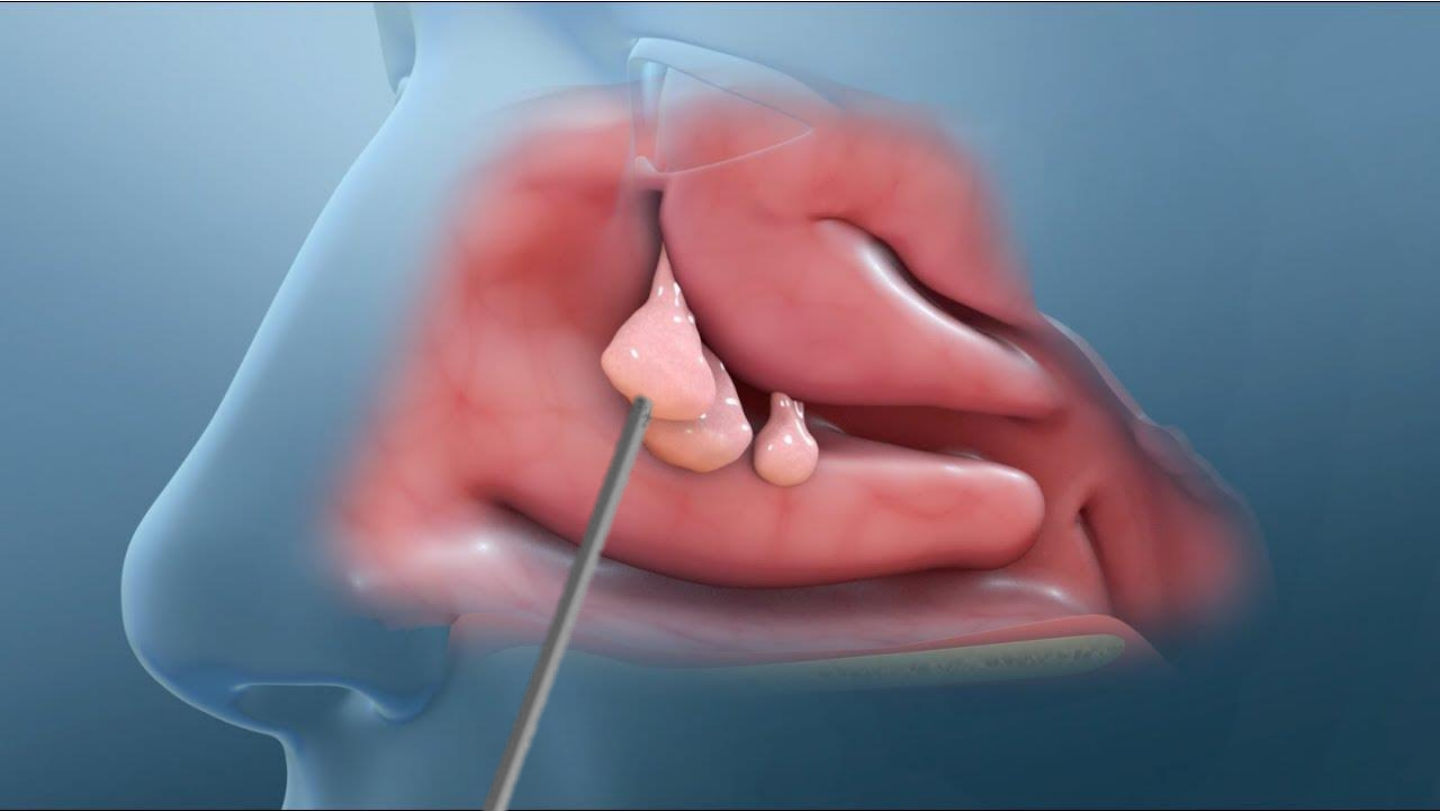


Ergonomic Unique Design
ENT Shaver System



Scoop

One of A Kind To Introduce

Gearless Motor drive & Bend Less
Suction Flow Path Hand piece



Inherent Unique

Gear less , bend less and straight hand piece ensures clog free and enhances free suction flow.

Quick digital functional mode selection by tapping TFT Display and Foot Switch



Perceptive bright TFT touch screen monitor with synchronizing sensors guides for easy mode selection

Speed Variation	600 – 12000 rpm Controlled by Foot pedal
Speed Selection (RPM) Forward / Reverse	<ul style="list-style-type: none"> • 1500 • 5000 • 8000 • 12000
Speed Selection (RPM) Oscillation	<ul style="list-style-type: none"> • 1500 • 3000 • 4500 • 6000
Flow Rate Selection Mode	<ul style="list-style-type: none"> • 15ml / min • 45 / min • 75 / min • 100 / min
Foot Pedal Control	<ul style="list-style-type: none"> • Forward / Reverse / Oscillation • Irrigation: ON / OFF
Hand Piece	Straight gearless leakage proof with 3m silicon cable Withstands washable and sterilization up to 150° for 15 minutes Hand piece weight: 270 grams including 3m cable
Power	220 – 240v 50Hz
Weight	6.5 kg

Compact multifunctional foot switch helps quick selection operational mode :
 Forward / Reverse / Oscillation / Suction Flow





Surgical Operating Microscope – Visualization System

- Neuro
- Spine
- P & R
- Micro-Vascular
- ENT
- Ophthalmology
- Andrology
- Colposcopy
- Dental

Specifications & Design are subject to change without prior notice as a result of further product development
2021

OEM / ODM / OBM